

W&H PEACOCK
AUCTIONEERS & VALUERS

Mid Century Design

Bedford Auction Centre
Friday 21st February | Commencing at 10.30am

Viewing: Friday 14th February 9am to 8pm
Saturday 15th February 9am to 5pm
Thursday 20th February 9am to 5pm
and Morning of Sale from 9am
www.peacockauction.co.uk



1 Geoffrey Baxter (1922-1995) for Whitefriars, a Textured Range 'Banjo' vase in indigo, '1967 9841 JD etched to the pontil, h. 32 cm
Est £800 - £1,200

3 Geoffrey Baxter (1922-1995) for Whitefriars, a Textured Range 'Basket Weave' vase in tangerine, h. 27 cm
Est £180 - £220

5 Geoffrey Baxter (1922-1995) for Whitefriars, a Textured Range 'Drunken Bricklayer' vase in kingfisher, h. 21 cm
Est £300 - £500

2 Geoffrey Baxter (1922-1995) for Whitefriars, a Textured Range 'Nuts and Bolts' vase in pewter, h. 27 cm
Est £180 - £220

4 Geoffrey Baxter (1922-1995) for Whitefriars, an oversized Textured Range 'Drunken Bricklayer' vase in kingfisher, h. 33.5 cm
Est £400 - £600

6 Geoffrey Baxter (1922-1995) for Whitefriars, a Textured Range 'Drunken Bricklayer' vase in tangerine, h. 21 cm
Est £300 - £500



7 Geoffrey Baxter (1922-1995) for Whitefriars, a Textured Range 'Drunken Bricklayer' vase in sage, h. 21 cm
Est £300 - £500

9 Geoffrey Baxter (1922-1995) for Whitefriars, a Textured Range 'Totem' vase in kingfisher, h. 26 cm
Est £120 - £150

8 Geoffrey Baxter (1922-1995) for Whitefriars, a Textured Range 'Totem' vase in tangerine, 9671 pattern sticker to the base, h. 26 cm
Est £120 - £150



10 Geoffrey Baxter (1922-1995) for Whitefriars, a Textured Range 'Cello' vase in tangerine, h. 18 cm

Est £250 - £300

11 Geoffrey Baxter (1922-1995) for Whitefriars, a Textured Range 'TV' vase in cinnamon, h. 17 cm

Est £200 - £300



12 Geoffrey Baxter (1922-1995) for Whitefriars, a Textured Range 'TV' vase in tangerine, h. 17 cm

Est £200 - £300

13 Geoffrey Baxter (1922-1995) for Whitefriars, a Textured Range 'Hoop' vase in aubergine, h. 29 cm

Est £300 - £500



14 Geoffrey Baxter (1922-1995) for Whitefriars, a Textured Range 'Hoop' vase in tangerine, h. 29 cm

Est £200 - £300

16 Geoffrey Baxter (1922-1995) for Whitefriars, a Textured Range 'Bottle' vase in tangerine, h. 20 cm

Est £80 - £120

17 Geoffrey Baxter (1922-1995) for Whitefriars, a Textured Range 'Bottle' vase in kingfisher, h. 20 cm

Est £60 - £80



18 Geoffrey Baxter (1922-1995) for Whitefriars, a Textured Range 'Mallet' vase in kingfisher, h. 18 cm

Est £50 - £80



19 Geoffrey Baxter (1922-1995) for Whitefriars, a Textured Range 'Bark' vase in kingfisher, h. 23.5 cm

Est £50 - £70

15 Geoffrey Baxter (1922-1995) for Whitefriars, a Textured Range 'Hoop' vase in indigo, h. 29 cm

Est £150 - £200





20 Geoffrey Baxter (1922-1995) for Whitefriars, a Textured Range 'Bark' vase in tangerine, with Whitefriars sticker, h. 23.5 cm
Est £50 - £70

22 Geoffrey Baxter (1922-1995) for Whitefriars, a Textured Range 'Bark' vase in indigo, h. 15.5 cm
Est £60 - £80

24 Geoffrey Baxter (1922-1995) for Whitefriars, a Textured Range 'Volcano' vase in meadow green, h. 18 cm
Est £150 - £200

21 Geoffrey Baxter (1922-1995) for Whitefriars, a Textured Range 'Bark' vase in ruby, h. 19 cm
Est £40 - £60

23 Geoffrey Baxter (1922-1995) for Whitefriars, a Textured Range 'Bark' vase in kingfisher, h. 15.5 cm
Est £30 - £50

25 Geoffrey Baxter (1922-1995) for Whitefriars, a Textured Range 'Pineapple' vase in tangerine, h. 18 cm
Est £120 - £150

26 Geoffrey Baxter (1922-1995) for Whitefriars, a Textured Range 'Shoulder' vase in pewter, h. 25 cm
Est £150 - £200

29 Geoffrey Baxter (1922-1995) for Whitefriars, a Textured Range 'Teardrop' vase in sage, h. 29 cm
Est £200 - £300

31 Geoffrey Baxter (1922-1995) for Whitefriars, a Textured Range 'Bark' vase in aubergine, h. 15.5 cm
Est £40 - £60

27 Geoffrey Baxter (1922-1995) for Whitefriars, a Textured Range 'Waisted' vase in cinnamon, h. 31.5 cm
Est £400 - £600



28 Geoffrey Baxter (1922-1995) for Whitefriars, a Textured Range 'Teardrop' vase in mauve, with Whitefriars sticker, h. 29 cm
Est £600 - £800

30 Geoffrey Baxter (1922-1995) for Whitefriars, a Textured Range 'Bottle' vase in kingfisher blue, h. 20.5 cm
Est £60 - £80

32 Geoffrey Baxter (1922-1995) for Whitefriars, an 'Ovoid' vase in cinnamon, w. 27 cm
Est £60 - £100



33 A 1960's Swedish teak occasional table inset with a copper-coloured Brutalist relief, in the manner of Heinz Lillenthal, 140 x 70 x 44 cm

Est £80 - £120

35 A set of six Danish 1970/80's teak framed dining chairs with oatmeal upholstery *SFP

Est £60 - £80

36 A pair of Scandinavian pine single-drawer bedside tables on square legs, 44 x 31 x 42 cm

Est £50 - £80

34 A 1960's Danish oak desk, the surface supported by two pedestals with an arrangement of one door and three drawers, the rear with a fall-fronted cupboard and shelves, on circular legs, 150 x 80 x 75 cm

Est £300 - £400

37 Charles and Ray Eames for Vitra, a pair of 2015 'Eames Plastic Armchairs', the blue shells on ebonised Eiffel Tower bases, stamped

Est £200 - £300



38 Edward Barber and Jay Osgerby for Vitra, a pair of 'Tip Ton' stacking chairs in pale blue, stamped

Est £80 - £120

39 Charles and Ray Eames for Vitra, a set of five 2016 'Eames Plastic Chairs' in turquoise on ebonised Eiffel Tower bases, stamped

Est £250 - £300

40 Charles and Ray Eames for Vitra, a set of five 2016 'Eames Plastic Chairs' in pale blue on ebonised Eiffel Tower bases, stamped

Est £250 - £300

41 A 1960's Danish teak and crossbanded desk with an arrangement of seven drawers on triangular legs, an open compartment to the rear, 134 x 64 cm

Est £200 - £300



- 42 An Ercol beech framed three-seater 203 sofa with loose green fleck cushions *SFP
Est £200 - £300



- 43 A chromed side table frame, designed by Eileen Gray (Irish, 1878-1976), di. 51 cm, h. 62 cm
Est £60 - £80

- 44 A 1970's teak framed rectangular wall mirror, 79 x 35 cm
Est £30 - £50

- 45 A set of four 1960/70's teak framed dining chairs with seagrass seats, presumably Danish
Est £60 - £80



- 46 A 1970/80's pine slatted trolley, 130 x 41 x 50 cm
Est £60 - £80

- 47 A 1960's Danish teak cabinet, the three sliding doors enclosing a mirrored and shelved interior, on triangular legs, 190 x 44 x 103 cm
Est £150 - £200

- 48 A 1970's oak bow-fronted chest of five drawers, 76 x 48 x 93 cm, together with a matching dressing chest, 143 x 48 x 69 cm (2)
Est £150 - £200



- 49 A 1960's Danish teak cabinet attributed to E.W. Bach for Sejling Skabe, the three sliding doors enclosing a shelved interior and two drawers, on triangular legs, 165 x 44 x 113 cm
Est £200 - £300

- 50 Attributed to Sigurd Ressel (Danish, 1920-2010) for Vatne Mobler, a 'Falcon' chair with a brown leather button upholstery on a bentwood frame with chromed clips *SFP
Est £300 - £400



51 A pair of contemporary oak framed armchairs with loose charcoal upholstered seats and backs *SFP
Est £200 - £300

52 A contemporary oak framed armchair with loose charcoal upholstered seat and back *SFP
Est £100 - £150

53 Michele De Lucchi & Giancarlo Piretti for Artemide, a 'Tolomeo Mega' floor lamp in polished aluminium
Est £300 - £400

54 A 1970's Danish 'Micha' Type 41.178 white enamelled two-tier ceiling light by Design Light A/S
Est £40 - £60

55 A 1970's Danish white enamelled two-tier pull-down ceiling light
Est £30 - £50

56 A Danish lilac enamelled open ceiling light
Est £30 - £50



57 A 1970's Danish brown enamelled open ceiling light
Est £30 - £40

58 A Danish brass coloured pull-down open ceiling light
Est £40 - £60

59 A 1970's Danish metallic-brown pendant light
Est £30 - £40



60 A Danish perspex ceiling light in the manner of Guzzini
Est £40 - £60

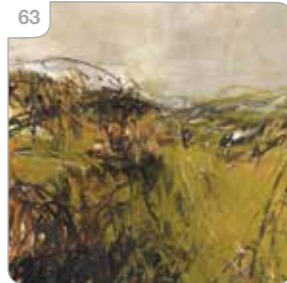
61 After Mikhail Larionov (1881-1964), 'The Harlequin Years', Parisian Musical Life in the 1920s, BBC Radio 3 poster, image 59 x 42 cm
Est £30 - £50

62 Liz Seward Relfe (contemporary), A still life scene, signed, acrylic on textured card, image 39 x 43 cm
Est £20 - £40



63 Julie Green (contemporary), 'Time for Change', intialled, pastel, Mall Galleries label verso, image 17.5 x 17.5 cm

Est £30 - £50



64 Vicki Oliver (contemporary, Olney), 'Pinks', signed, mixed media, image 36 x 26 cm, together with another by the same hand (2)

Est £80 - £120



66 A 1960/70's undulating turned teak table lamp, h. 47 cm excl. fittings, with a hessian shade

Est £50 - £80

67 A 1970's stainless sculpture in the form of splayed grass, on a square base, approx. freestanding h. 76 cm

Est £60 - £100



65 A pair of 1970's glass ceiling lights with graduated aluminium and copper finished shades on teak supports

Est £80 - £120



68 A small 1960's Swedish rya rug decorated with a deer within red, green, cream and brown bands, 95 x 63 cm excl. tassels

Est £20 - £30

69 A 1960's Swedish rya rug, the white/cream ground with floral and geometric motifs, 150 x 114 cm

Est £20 - £40

70 A 1960's Swedish rya rug, the cream/white ground decorated with floral motifs, 150 x 78 cm

Est £20 - £40

71 A 1960's Swedish rya rug, the white/cream ground with a geometric Modernist pattern, 225 x 99 cm excl. tassels

Est £100 - £150

72 A 1960/70's Swedish pine standard or floor lamp by Ikea, Typ G502, labelled to the base

Est £50 - £70

73-79 Rodney Kinsman (b. 1943) for OMK 1965, a set of ten 'Omkestak' black stacking chairs (10)

Est £200 - £300

80 Rodney Kinsman (b. 1943) for OMK 1965, a set of ten 'Omkestak' black stacking chairs (9)

Est £200 - £300



- 81 Evan Morgan (late 19th/early 20th Century), 'The Young Magician of Eros with the Reins of Love for Jack Pritchard', signed and dated 1914, gouache and watercolour, image 26 x 13 cm *From the estate of Jack & Molly Pritchard, founders of the Isokon firm and Isokon Furniture Company. The Pritchards lived for a while in the penthouse at the Lawn Road Flats in Hampstead and later at their Isokon bungalow in Blythburgh, Suffolk.

Est £80 - £120

- 82 Kenneth Rowntree (1915-1997), 'Autumn Vase', oil on board, image 24 x 15 cm, label verso for 'J. Leger & Son, 13 Old Bond St, London, W1, Old & Modern Masters', together with a Rowntree greetings card addressed to Jack & Molly Pritchard. *From the estate of Jack & Molly Pritchard, founders of the Isokon firm and Isokon Furniture Company. The Pritchards lived for a while in the penthouse at the Lawn Road Flats in Hampstead and later at their Isokon bungalow in Blythburgh, Suffolk.

Est £500 - £800

- 83 Kenneth Rowntree (1915-1997), 'Chanson d'Automne (Autumn Song)', signed and numbered 42/100, screenprint, image 54 x 39 cm *From the estate of Jack & Molly Pritchard, founders of the Isokon firm and Isokon Furniture Company. The Pritchards lived for a while in the penthouse at the Lawn Road Flats in Hampstead and later at their Isokon bungalow in Blythburgh, Suffolk.

Est £150 - £200



- 84 (?)Shashi Meh... (20th Century), Objects on a purple ground, indistinctly signed, screenprint, image 18 x 24 cm *From the estate of Jack & Molly Pritchard, founders of the Isokon firm and Isokon Furniture Company. The Pritchards lived for a while in the penthouse at the Lawn Road Flats in Hampstead and later at their Isokon bungalow in Blythburgh, Suffolk.

Est £30 - £50



- 85 20th Century School, An abstract study, unsigned, oil on board, image 30 x 22 cm, together with another oil study (2) *From the estate of Jack & Molly Pritchard, founders of the Isokon firm and Isokon Furniture Company. The Pritchards lived for a while in the penthouse at the Lawn Road Flats in Hampstead and later at their Isokon bungalow in Blythburgh, Suffolk.

Est £100 - £150

86 Helen Kapp (1901-1978), A European townscape, signed, image 28 x 37 cm, together with two etchings (3)
*From the estate of Jack & Molly Pritchard, founders of the Isokon firm and Isokon Furniture Company. The Pritchards lived for a while in the penthouse at the Lawn Road Flats in Hampstead and later at their Isokon bungalow in Blythburgh, Suffolk.

Est £50 - £80

87 Richard Bawden (1936-2024), 'Stealing Grapes', limited edition numbered 24/75, signed to the image, image 42 x 64 cm *From the estate of Jack & Molly Pritchard, founders of the Isokon firm and Isokon Furniture Company. The Pritchards lived for a while in the penthouse at the Lawn Road Flats in Hampstead and later at their Isokon bungalow in Blythburgh, Suffolk.

Est £80 - £120



89 David Mellor of Sheffield, a suite of stainless steel 'Chinese Ivory' cutlery contained in ten boxes, designed in 1975

Est £80 - £120

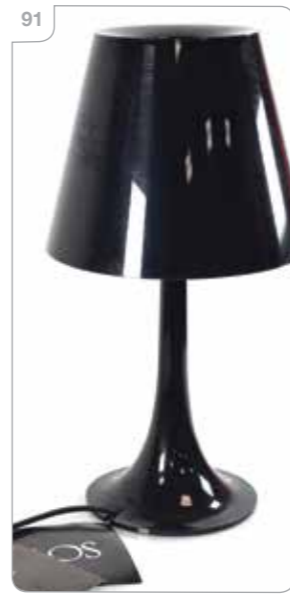


88 Richard Bawden (1936-2024), 'Bildeston Hall Garden', artist's proof, signed, image 38 x 55 cm

Est £80 - £120

90 Enzo Mari (Italian, 1932-2020) for Zani & Zani, a Bowie Smith stainless steel carving set together with a small group of Danish kitchen utensils and teaspoons by Stelton (Qty)

Est £30 - £50



91 Philippe Starck (French, b. 1949) for Flos, a 'Miss K T', table lamp, h. 43 cm, with two associated booklets

Est £100 - £150

92 M De Lucchi and G Fossina for Artemide, a 'Tolomeo Micro' adjustable table lamp in red

Est £60 - £80

93 A 1970's teak and glass ceiling light in the form of an umbrella

Est £50 - £70

94 A set of 1970's Danish adjustable wall lamps by Hamalux, enamelled in red, blue, yellow and orange (16)

Est £150 - £200



95 A 1930's French cast metal bankers lamp by Niam with a green enamelled adjustable shade, h. 42 cm

Est £50 - £80



96 A SEC Smiths Electric Clocks wall clock in a bakelite case, di. 31 cm

Est £50 - £70

98 Clarice Cliff for Wilkinson, a 'Fantasque' Range candlestick decorated in the 'Red Trees & House' pattern, ink stamps to the base, h. 8 cm

Est £200 - £300



100 A pair of 'Fat Lava' table lamps in the form of ewers with red and orange drip glazes, h. 53 cm each excl. fittings

Est £60 - £100

97 An Italian 'Bucella Cristalli Murano' scent bottle, a Gul-type bottle vase, a yellow glass bowl, cover and stand, a cinnamon open bowl etc. (5)

Est £80 - £120

99 A group of glass including a dragonfly etched bowl, an amber coloured dog, a tealight holder etc. (6)

Est £40 - £60



101 Carolyn Genders (b. 1947), a studio pottery bowl decorated with bold colours in an abstract pattern, incised signature, h. 22 cm, di. 25 cm

Est £150 - £200

102 Neil Tregear for Tregear Pottery, a stoneware vase decorated with birds in flight on a grey ground, monogram to the base, h. 18 cm, di. 13.5 cm, together with two matching jugs (3)

Est £150 - £200



103 A studio pottery vase decorated with autumnal colours and abstract shapes, with a ridged interior and tapering base, h. 26 cm

Est £30 - £40

104 A white glazed studio pottery vase of flared form in the manner of Waistel Cooper (1921-2003), impressed W monogram, h. 25 cm

Est £50 - £80

105



105 Sasha Wardell (b. 1956), a slip cast vase decorated with leaf motifs in pastel shades, ink signature to the base, h. 38 cm

Est £60 - £80

106

A studio pottery stoneware vase of ovoid form decorated with brown drip glazes on a white ground, h. 37 cm

Est £50 - £80

107

A group of contemporary studio pottery including a square footed plate, a rough-finished vase and a pair of tall vases, the first two stamped 'IC' (4)

Est £60 - £80

108



108 A studio pottery square wall plate by Deborah Hopson Wolpe, Olney Pottery, 25 x 25 cm

Est £20 - £30

109

A group of three studio pottery pieces in matt blue, impressed HP marks to two, including two vases and a low bowl (3)

Est £40 - £60

110



111 A white glazed studio pottery object in the style of Henry Moore, indistinctly signed, h. 19 cm

Est £20 - £30

111



112

Tim Andrews (b. 1960), a raku-style studio pottery bowl, impressed monogram, di. 20 cm, h. 9 cm

Est £50 - £80

112



113

A group of studio pottery including Derek Wilson, T & C, Huw Powell Roberts etc. (8)

Est £80 - £120

114

A group of studio pottery including a large ewer, h. 39 cm, an open bowl, di. 33 cm, a green glazed bowl and two further items (5)

Est £80 - £120

115

John and Sylvia Reid, a 'Metallux' standard lamp designed in 1956 Rotaflex Lighting Ltd, the white perforated shade on a black metal shaft and four-way base Literature: 'Austerity to Affluence: British Art & Design 1945-1962'

Est £800 - £1200

116

An Art Deco floor lamp, the brass shaft with bakelite moulded sections, on a copper-coloured pedestal base

Est £50 - £80





117 A 1960/70's teak two-tier bar cart or trolley, probably Danish, on circular tapering legs with castors, 71 x 47 x 63 cm
Est £40 - £60

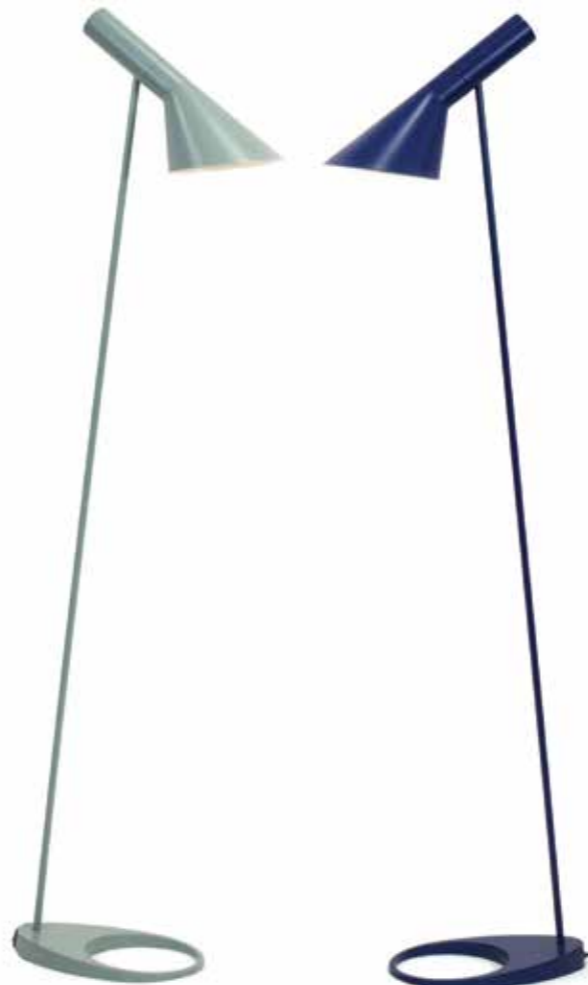
118 A pair of 1970's Swedish button upholstered armchairs by Slatte Gungan with bentwood frames and five-star swivel bases *SFP
Est £100 - £150

119 Carlo Jensen for Poul Hundevad, a 1960's Danish rosewood bookcase-cabinet, the adjustable shelves over a pair of doors enclosing a beech and maple fitted interior, on a plinth base, stamped and bearing Danish Control Badge, 108 x 43 x 196 cm CITES Article 10 Transaction Specific Ref: 24GBA10KCNGEM
Est £200 - £300



120 Alexandra Buckle (contemporary), 'Torii Sea View', linocut, numbered 5/10 verso, image 29 x 39 cm
Est £40 - £60

120 Alexandra Buckle (contemporary), 'Torii Sea View', linocut, numbered 5/10 verso, image 29 x 39 cm
Est £40 - £60



121 Hannah Thomas (contemporary, Bradford-on-Avon), A hare, initialled, acrylics, image 29 x 29 cm
Est £50 - £80

122 Jackie Bradley (contemporary), 'York', inscribed and dated 2017, artist's label verso, acrylic, image 27 x 24 cm
Est £20 - £30

123 Cecil S Kind (20th Century), An autumn landscape, signed, oil on board, image 44 x 60 cm
Est £30 - £50

124 1960/70's School, A lady in a white dress seated on a chair, unsigned, oil on board, 124 x 93 cm
Est £80 - £120



125 Ms A Watt (Towcester), 'Mnemonic Momentum Series Longwave', acrylic on paper, artist's label verso, image 45 x 73 cm
Est £30 - £50

126 Arne Jacobsen (1902-1971) for Louis Poulsen, an AJ floor lamp enamelled in royal blue, Poulsen label to the shade, Type 328709
Est £300 - £400

127 Arne Jacobsen (1902-1971) for Louis Poulsen, an AJ floor lamp enamelled in turquoise, Poulsen label to the shade, Type 328709
Est £300 - £400

128 A 1970's German elbow chair by Fröscher KG, the blue upholstered seat on a tubular metal frame with beech armrests *SFP

Est £40 - £60



129

129 Lucian Ercolani for Ercol, a Model 349 'love seat' in elm and beech with a shaped seat and fitted cushion *SFP

Est £400 - £600



130

130 A Danish rosewood and crossbanded coffee table by Trioh, on slab legs, stamped 78 to the frame, 126 x 65 cm CITES Article 10 Transaction Specific Ref: 24GBA101KP2OV

Est £150 - £200

131 A Sidly Langley Glass vase decorated with Stone Age figures, signed, h. 15 cm, di. 20 cm

Est £50 - £80

132 Vicke Lindstrand for Kosta, a 1950's Swedish 'Colora' Series vase, signed, di. 10 cm, h. 7 cm

Est £50 - £80



132

133 A Strathearn blue and gold speck glass 'inclusion' vase, h. 20 cm, together with a group of eight other glass vases (9)

Est £100 - £150

134 A group of Strathearn, Vasart and other glass vases (8)

Est £150 - £200

135 A 1987 glass lustre vase in the manner of Peter Layton, indistinctly signed, h. 16 cm, together with two scent bottles and stoppers and two further vases (5)

Est £60 - £100

138 A Whitefriars 'Knobbly' Range blue glass vase, h. 23 cm

Est £60 - £80

140 Matti Klenell for iittala, a Finish 'Nappula' plant pot, 2012, boxed, together with an unboxed example (2)

Est £60 - £80

136 A group of ten art glass bowls by Strathearn, Monart etc. (10)

Est £80 - £120

139 An Italian translucent glass bowl of flowerhead form bearing 'vetro eseguito secondo Murano' sticker, w. 40 cm, h. 14 cm

Est £50 - £80

141 An Art Deco 'Suparest' armchair with a beech bentwood frame and brown upholstery, label to the frame 'Pat. 407370 & 467099' *SFP

Est £250 - £300

137 A group of three Whitefriars glass vases including a green controlled bubble vase, an amber glass open vase and a low amber vase (3)

Est £70 - £90



142 A pair of 1970's Danish brass finished ceiling lights with flared conical bodies

Est £60 - £80

143 A 1970's Danish brass coloured ceiling light with a perspex diffuser

Est £30 - £50

144 A 1970's Danish ceiling light constructed of copper coloured and black enamelled strips with lustre-style motifs

Est £20 - £30

145 A Nordlux aluminium and teak mounted ceiling light together with two similar aluminium lights (3)

Est £70 - £100

150 A 1970's mahogany hat and coat stand with two tin trays, h. 185 cm

Est £60 - £80

151 After Josef Albers (German-American, 1888-1976), Homage to the Square (Orange with Brown Square) and vice versa, screenprint in colours, unsigned, with small watermark, part of the 'Formulation: Articulation' group, from an unknown limited edition run comprising part of the book, total image 37 x 100 cm

Est £200 - £300



146 A 1970's Danish brown enamelled open ceiling light

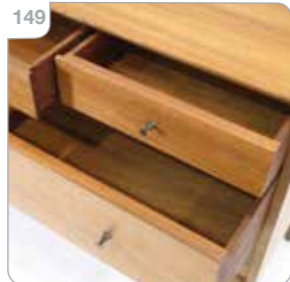
Est £30 - £40

147 A 1970's Danish white enamelled open ceiling light

Est £30 - £50

148 A 1970's floor lamp with a chromed shaft and perspex shade, in the manner of Guzzini

Est £70 - £90

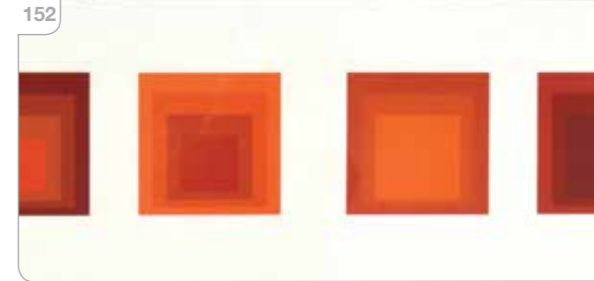


149 A 1950/60's English walnut chest of three short over two long drawer with brass tapered handles, 122 x 46 x 88 cm

Est £150 - £200

152 After Josef Albers (German-American, 1888-1976), Homage to the Square, four red and orange squares, screenprint in colours, unsigned, with small watermark, part of the 'Formulation: Articulation' group, from an unknown limited edition run comprising part of the book, total image 37 x 100 cm

Est £200 - £300



153 After Josef Albers (German-American, 1888-1976), Two Variants, screenprint in colours, unsigned, with small watermark, part of the 'Formulation: Articulation' group, from an unknown limited edition run comprising part of the book, total image 37 x 100 cm

Est £200 - £300

154 After Josef Albers (German-American, 1888-1976), Two Variants including P1, F17, I1, screenprint in colours, unsigned, with small watermark, part of the 'Formulation: Articulation' group, from an unknown limited edition run comprising part of the book, total image 37 x 100 cm

Est £200 - £300

155 After Victor Vasarely (Hungarian-French, 1906-1997), Dom IV VB, screenprint, signed as part of the print, image 66 x 34 cm
Est £100 - £150



156 An amethyst cased-glass slab vase, h. 19.5 cm
Est £30 - £40

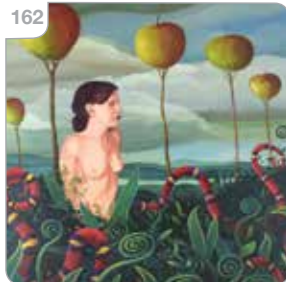
157 A contemporary white-lined glass bowl of open form, di. 22 cm, h. 13 cm
Est £30 - £40

158 A group of glass including a Whitefriars lemonade jug, a 'uranium' glass flared bowl, a pair of 'elephant foot' stem vases, an Italian bottle jug etc. (8)
Est £40 - £60

159 An end-of-day art glass waisted vase, h. 33 cm, together with a similar smaller vase and a lily vase (3)
Est £40 - £60

160 A clear glass five-section tealight holder of graduated form together with a textured glass 'ice' ashtray (2)
Est £20 - £30

161 Enid Seeneey (1931-2011) for Ridgway, a set of five 1950/60's bowls decorated in the 'Homemaker' pattern (5)
Est £50 - £80



162 Michael Forbes (b. 1968), 'Eve', signed verso, oil on canvas, image 75 x 74 cm
Est £100 - £150

163 Michael Forbes (b. 1968), 'Touched by Beauty', signed verso, oil on canvas, image 76 x 60 cm
Est £100 - £150

164 Michael Forbes (b. 1968), 'Fools Seldom Differ', signed verso, oil on canvas, image 50 x 75 cm
Est £150 - £200

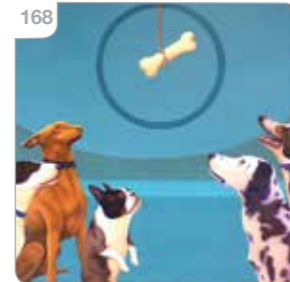


165 Michael Forbes (b. 1968), 'I Smash my Dolls', signed verso, oil on canvas, image 49 x 75 cm
Est £150 - £200

166 Michael Forbes (b. 1968), 'A Brush with Nature', signed verso, oil on canvas, image 61 x 77 cm
Est £150 - £200



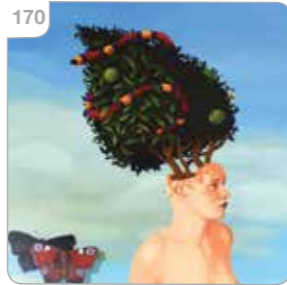
167 Michael Forbes (b. 1968), 'It Came From Under the Bed', signed verso, oil on canvas, image 63 x 93 cm
Est £150 - £200



168 Michael Forbes (b. 1968), 'Keep Your Eyes on the Prize', signed verso, oil on canvas, image 60 x 75 cm
Est £150 - £200



169 Michael Forbes (b. 1968), 'Clone (Bulldogs)', signed verso, oil on canvas, image 49 x 60 cm
Est £100 - £150



170 Michael Forbes (b. 1968), 'Temptation', signed verso, oil on canvas, image 51 x 76 cm
Est £100 - £150

171 Michael Forbes (b. 1968), 'Pigeon Holed', signed verso, oil on canvas, image 50 x 121 cm
Est £200 - £300



172 Michael Forbes (b. 1968), 'Devil Dog', signed verso, oil on canvas, image 46 x 61 cm
Est £100 - £150

173 A 1950/60's Danish beech framed chair with an upholstered seat and hoop-shaped back on tapering legs *SFP
Est £60 - £100



Mid-Century Design Soft Furnishings Policy

The Furniture and Furnishings (Fire) (Safety) Regulations 1988 (as amended in 1989 and 1993) state that all soft furnishings holding foam must conform to BS 5852 standards. This means that any post-1988 furniture will need to bear a fire label for auction purposes.

The following exceptions apply:

- Items constructed pre-1950. [Regulation 4(a)]
- Items being sold to someone who is in the business of reupholstering furniture. [See Regulation 4[b] and Consumer Protection Act 1987, s.46(7)]
- Items being sold to someone who is in the business of dealing in furniture. [Regulation 14(1)]
- Items being sold that will not be used in a domestic setting in the UK; e.g. for export, for use in a museum or theatre, as a work of art. [Regulation 3(1a) and 4(c)]

The Mid-Century period has been recognised as an area of increased interest to collectors for many years now. The relevant soft furnishings in our sales have been carefully selected to be collector's pieces which are purchased for their design qualities.

Soft furnishings in this sale are being sold as collector's items and are NOT intended for private use in the UK. They may not be in compliance with the Furniture & Furnishings (Fire)(Safety) Regulations 1988 and should be re-upholstered to conform to BS 5852 prior to any use in a domestic dwelling.

Bids are only accepted on the agreement that the furnishings will not be used in a domestic dwelling in the UK.

This policy is in-line with all major UK auctioneers and the Mid-Century trade.



174 A set of three 1960's Danish teak nesting occasional tables, max. 56 x 38 x 46 cm
Est £40 - £60

175 A late 20th century table, the circular beech surface resting on a grey painted platform base, di. 147 cm
Est £60 - £80

176 A 1960's teak and crossbanded coffee table of rectangular form by CFC Silkeborg, with a drawer and slide to the ends, on square legs, badge to the base, 135 x 65 x 60 cm
Est £80 - £120

177 A 1960's walnut vinyl record/LP cabinet with two sliding doors, on black painted spindle legs, 71 x 40 x 68 cm
Est £60 - £80

178 A 1960's Danish teak secretaire in the manner of Poul Jensen, the superstructure with three drawers and three compartments over a slide and three long drawers, on circular tapering legs, 85 x 43 x 97 cm
Est £150 - £200

179 Matthew Long for Habitat, an Oregon dining table, the veneered surface resting on a black oak frame, labelled, designed in 2018, 220 x 100 x 75 cm
Est £150 - £200

180 Attributed to Erik Worts (Danish, 1916-1997) for Ikea, a 1960's oak framed three-seater sofa in the 'Kolding' style, with loose green cushions, stamped 'Made in Poland', *SFP
Est £400 - £600



181 Ekso Pajamies for Asko, a 1960's Finnish 'Bonanza' three-seater sofa with a dark stained frame and loose blue cushions *SFP
Est £400 - £600

182 A 1970's teak chest of six long drawers with silver-coloured highlights to the handles and white drawer linings, 83 x 40 x 126 cm
Est £100 - £150



186



187

Robert Heal for Staples, a teak modular 'Ladderax' shelving system including two free-standing black metal uprights, a bureau, a glazed sliding door cabinet and two shelves, width 80 cm each

Est £150 - £200

188

A pair of 1960/70's Danish stools, the single button upholstered tops on turned legs joined by stretchers *SFP

Est £40 - £60

183

A textile wall hanging with a needlework flower on a red ground with blue and yellow stripes, 240 x 170 cm

Est £50 - £80

185

A 1960's Danish teak and crossbanded drawer-leaf dining table on circular legs, stamped 'Made in Denmark', 84 x 130-236 cm

Est £100 - £150

189

A 1970's Danish woollen rug depicting a nude seated figure, 107 x 70 cm

Est £40 - £60

184

A textile rug, the cream ground with a thin black geometric pattern, 200 x 136 cm

Est £20 - £30

186

A 1960's Danish teak and crossbanded extending oval dining table by Gudme Mobelfabrik, control sticker and maker's stamps to the base, with two fitted leaves, on circular legs, 101 x 148-245 cm

Est £200 - £300

190

A Swedish rag woven wall hanging, the blue ground with a stylised mother and child motif, 155 x 74 cm

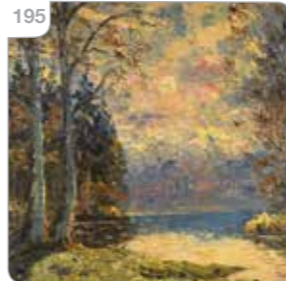
Est £50 - £80

193

Continental School, A girl resting on a sandy beach, indistinctly signed ...Asserbo and dated 1926, oil on canvas, image 25 x 31 cm

Est £60 - £100

195



191

PJ (Continental School), A vibrant street, initialled and dated 59, oil on canvas, image 48 x 40 cm

Est £50 - £80

193



195

Finn Wennerwald (Danish, 1896-1969), A wooded landscape, a lake or sea in the background, signed, oil on canvas, image 50 x 54 cm

Est £60 - £100

192

R. Neveux (French School), A winding village street, signed, oil on board, image 48 x 44 cm

Est £50 - £80

194

Gerda Tougaard (Scandinavian), 'Hamlet', signed and dated 1976 verso, oil on canvas, image 47 x 25 cm

Est £30 - £40

196

Per Dahl (Danish, b. 1930), 'Fishers... Dream', signed, dated 1974 verso, oil on canvas, image 50 x 39 cm

Est £40 - £60





197 Joyce Sutherland Smith (Norwich), 'Contemplation', signed and numbered 2/10, etching, image 27 x 18 cm
Est £30 - £40

199 G. Maibom (21st Century), Three line figures on a green ground, signed, oil on canvas, image 60 x 80 cm, together with two further oil on canvas artworks (3)
Est £60 - £100

201 Margaret Mellis (Scottish, 1914-2009), '7 Triangles', signed and dated 1978 ink ink verso, oil on canvas and card sections, central image 19.5 x 19 cm
*From the estate of Jack & Molly Pritchard, founders of the Isokon firm and Isokon Furniture Company. The Pritchards lived for a while in the penthouse at the Lawn Road Flats in Hampstead and later at their Isokon bungalow in Blythburgh, Suffolk.
**Artist's Resale Rights may apply to this lot.
Est £600 - £800

198 20th Century English School, Glamorous ladies taking tea, unsigned, oil on board, image 54 x 44 cm
Est £20 - £30

200 K.B. (20th Century English School), A nude lady lying on a couch, a dressed lady in the background, initialled and dated 51, numbered 6 verso, oil on canvas, image 53 x 73 cm
Est £80 - £120

202 Jane Corsellis (b. 1940), 'Mt Abu Jain Temple', signed, oil, image 14 x 35 cm 'The New Academy Gallery' label verso
*From the estate of Jack & Molly Pritchard, founders of the Isokon firm and Isokon Furniture Company. The Pritchards lived for a while in the penthouse at the Lawn Road Flats in Hampstead and later at their Isokon bungalow in Blythburgh, Suffolk.
Est £300 - £500



203 Kenneth Martin (1905-1984), 'Three Colours: Chance and Order 1976', Design Research Unit folio for Christmas 1977, together with a further 1974 folio of Robyn Denny 'Glass 2 (From There) 1971' (2) *From the estate of Jack & Molly Pritchard, founders of the Isokon firm and Isokon Furniture Company. The Pritchards lived for a while in the penthouse at the Lawn Road Flats in Hampstead and later at their Isokon bungalow in Blythburgh, Suffolk.
Est £120 - £150



204

- 204 William Herbert Mills (1923–1997), 'Curvilinear Pattern (Ink)', ink and watercolour, signed and dated 53, details verso, image 17.5 x 23 cm, together with another matching (2)
*From the estate of Jack & Molly Pritchard, founders of the Isokon firm and Isokon Furniture Company. The Pritchards lived for a while in the penthouse at the Lawn Road Flats in Hampstead and later at their Isokon bungalow in Blythburgh, Suffolk.

Est £50 - £80

- 205 Stephen Cohn (20th Century), 'Royal Bathing Party', signed, dated '73 and numbered 'AP VII/X', inscribed 'For Jack and Molly to celebrate 9th august 1974', image 15 x 15 cm
*From the estate of Jack & Molly Pritchard, founders of the Isokon firm and Isokon Furniture Company. The Pritchards lived for a while in the penthouse at the Lawn Road Flats in Hampstead and later at their Isokon bungalow in Blythburgh, Suffolk.

Est £50 - £80

- 206 20th Century Impressionist School, A yacht at sea, numbered 73, possibly the Pritchard's own yacht, indistinctly signed '...assett' and dated '44, oil on board, image 23 x 29 cm *From the estate of Jack & Molly Pritchard, founders of the Isokon firm and Isokon Furniture Company. The Pritchards lived for a while in the penthouse at the Lawn Road Flats in Hampstead and later at their Isokon bungalow in Blythburgh, Suffolk.

Est £50 - £80

205



206

- 207 Jessica Strang (1938–2021), an album of fruit and leaf type prints, inscribed 'For Jack - love Jessica Strang 9 June 1973' *Strang was an architectural photographer who took a well used marketing photo of Jack Pritchard reclining in an Isokon 'Long Chair'. **From the estate of Jack & Molly Pritchard, founders of the Isokon firm and Isokon Furniture Company. The Pritchards lived for a while in the penthouse at the Lawn Road Flats in Hampstead and later at their Isokon bungalow in Blythburgh, Suffolk.

Est £80 - £120

- 208 David Hockney (inspired by Wallace Stevens): 'The Blue Guitar', a book of etchings, published by Petersburg Press, together with 'Mein Studienbuch' published by Kurt Wolff Verlag (2) *From the estate of Jack & Molly Pritchard, founders of the Isokon firm and Isokon Furniture Company. The Pritchards lived for a while in the penthouse at the Lawn Road Flats in Hampstead and later at their Isokon bungalow in Blythburgh, Suffolk.

Est £100 - £150

- 209 A perspex case containing an apprentice model of an armchair, with a label 'Returned with much pleasure, having kept it aired for you during the recent unpleasantness. John Gloag November 1944' *John Gloag (1896-1981) was a well-known writer in the fields of furniture and design. **From the estate of Jack & Molly Pritchard, founders of the Isokon firm and Isokon Furniture Company. The Pritchards lived for a while in the penthouse at the Lawn Road Flats in Hampstead and later at their Isokon bungalow in Blythburgh, Suffolk.

Est £40 - £60

- 210 John Piper (1903-1992), A design for the upholstery fabric on the Isokon 'Long Chair', various notes verso, some identified as Jack Pritchard's writing, oil on paper, possibly with some printing below, 43 x 30 cm, in brown paper packaging dated '93 and labelled 'c/o Dr A Grieve [Alastair Grieve] and Mrs D. Sharp' *From the estate of Jack & Molly Pritchard, founders of the Isokon firm and Isokon Furniture Company. The Pritchards lived for a while in the penthouse at the Lawn Road Flats in Hampstead and later at their Isokon bungalow in Blythburgh, Suffolk.

Est £300 - £500

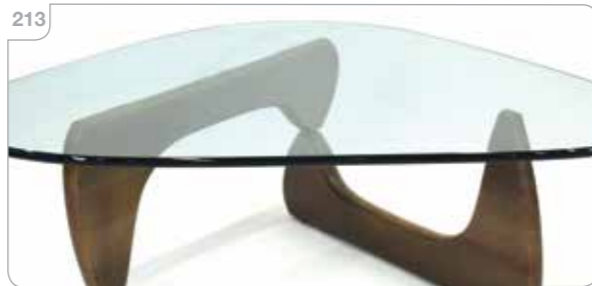


211 After Arne Jacobsen (Danish, 1902-1971), an 'Egg' style armchair upholstered in orange, on a four-star swivel base *SFP

Est £150 - £200

212 Charles & Ray Eames for Vitra, a 2014 Elliptical Table ETR, the white surfboard laminate surface on aluminium rod supports, label to the underside, 228 x 74 x 25 cm

Est £300 - £400



213 Isamu Noguchi (American, 1904-1988) for Vitra Design Museum, a 2001 'Authorised Re-edition Noguchi Coffee Table' with an associated bevelled glass surface resting on the folding base with badge, 128 x 92 cm

Est £400 - £600



216 A 1970/80's rosewood and crossbanded extending dining table, 136 x 90 cm, with two fitted leaves CITES Article 10 Transaction Specific Ref: 24GBA10Y4F909

Est £100 - £150

215 A 1960/70's three-seater sofa, the coffee and cream striped seats surrounded by a black frame with outswept arms *SFP

Est £200 - £300

214 Arne Jacobsen (Danish, 1902-1971) for Fritz Hansen, a 'Swan' chair upholstered in orange fabric on a four-star swivel base *SFP

Est £500 - £800

219 Chili (b. 1980, Chile/Denmark), Lines on a cream ground, Decor acrylic marketed by Maleriefabriken, image 61 x 61 cm, together with another by the same hand and a similar acrylic (3)

Est £50 - £80



220 A 1970/80's Danish oak and crossbanded dining table by AM Ansager Møbler, with tiled inserts to the surface, on a pair of supports joined by a cross-stretcher, stamped 'Made in Denmark AM 46', 163 x 90 cm

Est £150 - £200

221



221

A 1960's Danish oak and crossbanded desk with an arrangement of six drawers, the rear with three open compartments, on square straight legs, 154 x 80 cm

Est £200 - £300

222

Continental School, Figures washing their hair, indistinctly signed, watercolour, image 74 x 55 cm, together with two others by the same hand (2)

Est £100 - £150

223

Michael Flint (Orford, Suffolk), A group of etchings and aquatints including: 'Remakes and Sequels' Nos. 17, 20, 23, 33, 45, 'Sailing Boat' etc. (14), together with seven unsigned etchings

Est £150 - £200

224

Two contemporary art glass table centres of 'handkerchief' form (2)

Est £30 - £50

225



225

A red Swedish Ericofon telephone by Ericsson, manufactured in Ohio, together with a beige example and a further American telephone (3)

Est £80 - £120

226

Nellie Blackmore for Poole Pottery, a large vase decorated in the EC pattern, numbered 85, 1974-76, h. 39
*The EC pattern was designed by Truda Carter in the late 20's/early 30's. It was revived in the mid-1970's as a technical demonstration of the painter's art.

Est £250 - £300

227

Gwen Dry for Poole Pottery, a V pattern (Leo the Lion) 443 vase, mark 19 on painted terracotta base, ci. 1935, h. 18 cm

Est £40 - £60



228

Mary Brown for Poole Pottery, an HE 'Bluebird' pattern 203 vase, mark 21 on a terracotta base, 1926-1934, h. 21.5 cm

Est £30 - £40

229

A Poole Pottery 'Delphis Range' 85 vase, attributed to Ros Sommerfelt, ci. 1976, h. 43 cm

Est £30 - £50

230

Leslie Elsdon for Poole Pottery, a 1970's 'Aegean' Range charger decorated with 'Yachts at Sunset', di. 36 cm, together with a 'Delphis' Range fruit-bowl in shades of red and orange, di. 34 cm (2)

Est £40 - £60

- 231** Poole Pottery for Compton & Woodhouse, a boxed set of four limited edition 'Poole Ships' maritime plates, each individually boxed with certification, including 'Polly', 'The Ship of Harry Paye', 'Waterwich' and 'General Wolfe' (4)

Est £80 - £120

- 232** Lars Hellsten (Swedish, 1933-2022) for Orrefors, 1933-2022) for Orrefors, a boxed 4700/14 'Odyssey' heavy clear glass bowl, signed and numbered LH4700.14, w. 25 cm, together with an Alvar Aalto glass 'Savoy' bowl, signed (2)

Est £60 - £80

- 234** A boxed Sinclair 'The Black Watch' with instruction leaflet

Est £100 - £120

- 233** A collection of annual Glyndebourne Festival Opera programmes, the covers of which feature the work of contemporary artists and designers including Oliver Messel 1953, Osbert Lancaster 1960, Emanuele Luzzati 1967, Hugh Casson 1976, Elizabeth Bury 1977, Tobias Hoheisel 1992 and Richard Hudson 1996

Est £40 - £60

- 235** Rosemary Wren (1922-2013), a studio pottery sculpture modelled as a gorilla or monkey, maker's marks to the inside leg, h. 60 cm

Est £300 - £500



- 236** John Bratby RA (1928-1992), 'David Aged Four and Self October 1959' or 'Double Self Portrait', signed and dated, mixed media, image 57 x 61 cm, with sales receipt and exhibition flyer from Compendium Galleries 1970

*Artist Resale Rights may apply to this lot.

Est £2000 - £3000

- 237** A 20th century clear art glass table centre of flared form, believed to be French, h. 23 cm, w. 56 cm (corner to corner)

Est £50 - £80



238 In the manner of Karl Hagenauer (Austrian, 1898-1956), a bronze sculpture modelled as a female head, on a block base, h. 40 cm, w. 23 cm

Est £300 - £500



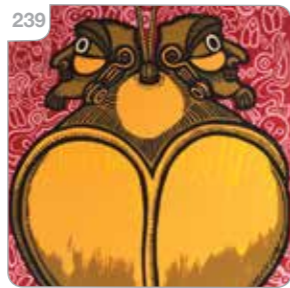
241

240 Cesar Aguilera (Chile), 'Rapa Nui '87', lithographic poster, 76 x 52 cm, together with a lithographic poster after Roberto Forster of the same island (2)

Est £60 - £100

241 After Damien Hirst (b. 1965), 'Fragility Blossom', Poster commemorating 'Cherry Blossom' series for the solo exhibition at Fondation Cartier, 6 Juillet 2021-2 Janvier 2022, Printed on 220 gsm fine art paper, 60 x 80 cm

Est £180 - £220



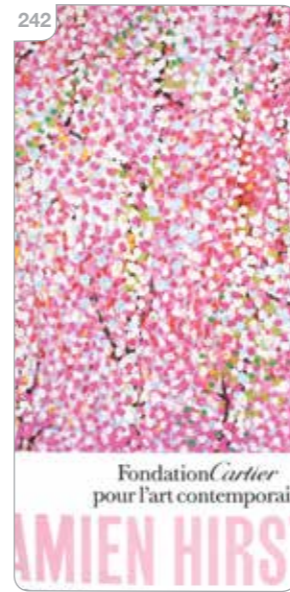
239

239 Cesar Aguilera (Chile), 'Rapa Nui '86', lithographic poster, 76 x 52 cm, together with a lithographic poster after Roberto Forster of the same island (2)

Est £60 - £100



240



242

242 After Damien Hirst (b. 1965), 'Emperor's Blossom', Poster commemorating 'Cherry Blossom' series for the solo exhibition at Fondation Cartier, 6 Juillet 2021-2 Janvier 2022, Printed on 220 gsm fine art paper, 60 x 80 cm

Est £180 - £220

243 After Julian Opie (b. 1958), 'Steve Guitar' (Steve Morse from Deep Purple) Poster for Montreux Jazz Festival 2006 Screenprint on 250 gsm wove paper, 100 x 70 cm

Est £200 - £250

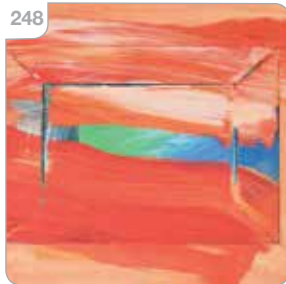


244 After David Hockney (b. 1937), 'Mount Fuji and Flowers', off-set lithograph, 86 x 64 cm
Est £40 - £60

245 After Francis Bacon (1909-1992), 'Georges a Bicyclette', Printed on Stonehenge paper, Edition of 500 published by Maeght, printed by Arte, 85 x 65 cm
Est £40 - £60



247 After Marc Chagall (Russian-French, 1887-1985), 'Le Chevauchee' (Hors e Ride), off-set lithograph, no text, published by Pace Columbus for Exhibition in 1979, 31 x 22 inches (2 copies, 1 with text), together with 'The Magic Flute (Die Zauberflote)' for Metropolitan Opera, and Chagall at Pace Columbus (4)
Est £80 - £120

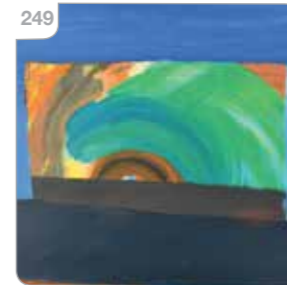


248 After Sir Howard Hodgkin (1923-2017), 'The Sky's the Limit', serigraph, edition of 500, published by The Lincoln Center in 2003 76 x 83 cm, together with 'Venetian Glass' poster produced for the 'Mostly Mozart Festival, Avery Fisher Hall, Lincoln Centre' (2)
Est £100 - £150

246 After Marc Chagall (Russian-French, 1887-1985), 'The Pink Opera - Opera Rose' (1981). Exhibition poster created for a show held at Galerie Maeght in Paris in 1981 91 x 57 cm
Est £100 - £150



249 After Sir Howard Hodgkin (1923-2017), 'Gossip' printed poster, no text, 82 x 114 cm
Est £120 - £150



250 After Pablo Picasso (Spanish, 1881-1973), 'The Pigeons', 1995, large reproduction of the view from Picasso's window in Cannes, Grafisk Produktion poster, 122 x 90 cm
Est £80 - £120

251 Borge Mogensen (Danish, 1914-1972) for Frederica Stolefabrik, a pair of 1970's oak framed armchairs, maker's labels to the frames *SFP
Est £150 - £200

252 Borge Mogensen (Danish, 1914-1972) for Frederica Stolefabrik, a pair of 1970's oak framed armchairs, maker's labels to the frames *SFP
Est £150 - £200

253 A 1970's Danish two-seater sofa with a chrome plated frame and brown leather button upholstery, designed by Ebbe Gehl *SFP
Est £150 - £250



254



254

An Airborne International of France 'Space Age' shell armchair upholstered in black leather, after the design by Joe Colombo, label below the seat *SFP

Est £200 - £300

255

A 1960's Danish beech and upholstered elbow chair *SFP

Est £40 - £60

256



256

A 1970's mustard vinyl armchair with teak detail to the arms and beech tapering legs *SFP

Est £30 - £50

257

Attributed to Ake Fribytter, a Swedish 'Kroken' armchair with a beech frame and black leather upholstery *SFP

Est £100 - £150

257



258

A group of four 1970's white enamelled floor lamps (4)

Est £80 - £120

259

A group of three 1970's Danish black and brown enamelled floor lamps, together with a contemporary Danish lamp (4)

Est £80 - £120



260

A pair of Middlewood Designs 'Suffolk Recliners' with matching footstools, upholstered in pale green, with receipts and spare cords *SFP

Est £150 - £200

261

A 2002 art glass vase of squat proportions, the blue cased-glass footstools, upholstered in pale green, with receipts and spare cords *SFP

Est £25 - £30

262

Attributed to Aldo Londi for Bitossi, a Rimini Blu vase decorated with blue bands, ink '502/20' and stamped 'Italy', h. 21.5 cm, together with a matching triangular form vase and open bowl (3)

Est £70 - £100

263

A group of three cased Swatch Quartz wristwatches (3)

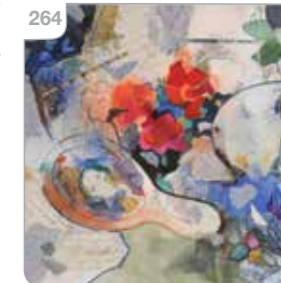
Est £50 - £80

264

Susan Pendered (1925-2021), 'Remember That Day', paper collage, The Mall Galleries label verso, 27 x 39 cm

Est £60 - £80

264



265



265 Winifred Pickard (1900-1996), 'Xmas 76', signed, coloured etching, image 15 x 17 cm

Est £20 - £30

266

Peter Wray (b. 1950), 'Shipbuilding No. 1', signed and numbered 4/10, limited edition print, image 28 x 38 cm

Est £20 - £30

267

Ronald Maddox (1930-2018), 'Pakenham Watermill, Suffolk', signed, pastel and watercolour, image 29 x 49 cm

Est £100 - £150

265



268 Valerie Thornton (1931-1991), 'Citadilla', signed and numbered 47/75, aquatint, image 33 x 48 cm

Est £60 - £80

269

David Easton RI (1935-2019), 'Last Poppies', signed and dated 1986, watercolour, image 46 x 65 cm

Est £60 - £80

270

A Danish teak tray with slots for flatware and plates, 41 x 32 cm, together with a pair of ceramic cube lights (3)

Est £40 - £50

271

A Val St Lambert cased-glass green tinted table lamp, signature to the base, sticker to the side, h. 39 cm incl. fittings

Est £50 - £80



272

A late 20th century Danish pine desk, the tooled leather lift-top surface surmounted by letter compartments and six drawers, on square legs joined by stretchers, with a brass plaque 'Handmade in Denmark by Finn N. Hansen for Stephen Russon 1993', 145 x 80 x 105 cm

Est £350 - £450



273

A Herbert E Gibbs teak two-drawer side table or desk, badge to the base, 91 x 45 x 71 cm

Est £50 - £80

275

A 1970's standard lamp, the white enamelled shade on an adjustable shaft with a circular black base

Est £30 - £40

276

A contemporary swivel chair and footstool after the 'Corona' chair by Poul Volther, upholstered with black faux crocodile skin pads

Est £100 - £150

274

A 1960's walnut occasional table, the cushioned surface on black legs with slats below, 136 x 49 x 45 cm

Est £50 - £70

275



277 A set of four Gaber Design 'Prodige' stacking chairs, made in Italy
Est £50 - £80



279 A nest of three 1950/60's Remploy walnut occasional tables, max. 68 x 39 x 49 cm, together with a green vinyl upholstered stool on tapering legs *SFP
Est £40 - £60



278 A set of four light blue 'Loft' stacking chairs designed by Robin Day
Est £50 - £80

280 Attributed to Heals, an Art Deco walnut corner desk with an arrangement of five drawers and two cupboard doors, on plinth bases, 89 x 89 x 77 cm
Est £300 - £500



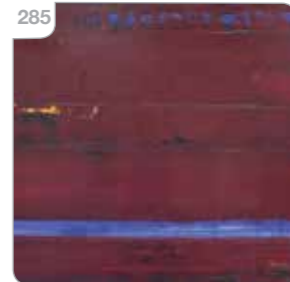
281 Gunni Omann (Danish, b. 1930) for ACO, a Model 13 teak sideboard with an arrangement of four drawers and three sliding doors, on circular tapering legs, 239 x 47 x 80 cm
Est £300 - £500

282 Johannes Andersen (Danish, b. 1903) for CFC Silkeborg, a 1960's teak coffee table with canted edges and tapering legs, badge to the base, 133 x 59 x 48
Est £250 - £300

283 Finn Juhl (Danish, 1912-1989) for France & Son, a set of four 1960's teak framed dining chairs upholstered in green fleck fabric, badges to the frames and stamped 'Made in Denmark' *SFP
Est £400 - £500



284 A set of four Walter Knoll 'Art Collection' armchair, the laminate beech frames supporting green padded seats and backs *SFP
Est £100 - £200



285 Paul Battams (Australian, b. 1953), 'Minamurra Blue', signed and dated 1999 verso, oil on canvas, 120 x 199 cm
*Exhibited at the Australian House 1999 Exhibition.
Est £200 - £300



286 Lord Norman Foster (b. 1935) for Tecno, a 'Nomos' table, the 14mm glass surface resting on a four-star chrome base, di. 120 cm
Est £400 - £600

288 A Herman Miller 'Aeron' desk chair on a five-star swivel base, size B
Est £180 - £220



290 Attributed to Sigurd Ressel (Danish, 1920-2010) for Vatne Mobler, a 'Falcon' high-back chair with winged arms and brown leather button upholstery on a bentwood frame with chromed clips *SFP
Est £200 - £300

287 Mart Stam (Dutch 1899-1986) for Fasem, a set of six 1980's Italian S33 cantilever dining or side chairs, the chromed frames with slung tan leather seats and backs, labels to the base of the leather
Est £600 - £800

289 A pair of 1980/90's Bugatti-inspired elbow chairs with red padded seats and flat chrome-plated steel frames, on five-star swivel bases *SFP
Est £80 - £120

290 Attributed to Sigurd Ressel (Danish, 1920-2010) for Vatne Mobler, a 'Falcon' high-back chair with winged arms and brown leather button upholstery on a bentwood frame with chromed clips *SFP
Est £200 - £300

291 A Swedish 'String' system designed in 1949 by Kajsa and Nisse Strinning, including two wall-mounted uprights, two wall-leaning uprights and three shelves, the clips each stamped 'String', w. 78 cm, h. 88 cm
Est £120 - £150



293 After Henri Matisse (French, 1869-1954), 'Interior with Dog', 2007 exhibition poster for 'The Baltimore Museum of Art', 71 x 66 cm
Est £30 - £40



294 After Alexander Calder (American, 1898-1976), 'Albi', 2014 exhibition poster, published by Arte/Maeght in Paris, 90 x 59 cm, together with an off-set lithograph poster for Pace/Columbus Exhibition 1971, La Greouille et la Scie (large) (2)
Est £50 - £80

292 After Andy Warhol (American, 1928-1987), 'Marilyn-Orange shot on white background', off-set lithograph, Edition of 2,000 published by Te Neus in 1992, 31 x 23 inches (2 copies), together with 'Princess Diana', Edition of 1,000, and 'Marilyn' published by Te Neus in 1996 (4 total)
Est £80 - £120



295 After Roy Lichtenstein (American, 1923-1997) 'Girl and Spray Can', poster for the 2013 Lichtenstein Retrospective at the National Gallery of Australia, 59 x 74 cm, together with 'Reflections on a Crash' (2)
Est £80 - £120

296 After Roy Lichtenstein (American, 1923-1997) 'Seductive Girl', poster for the 2007 Fundacion Juan March, Madrid, 68 x 86 cm, together with 'Reflections on a Crash', poster for the 2013 Lichtenstein Retrospective at the National Gallery of Australia (2)
Est £80 - £120

297 A 1960's copper table lamp with a perforated shade, h. 42 cm

Est £30 - £40



298 Rodolfo Dordoni for Matteo Grassi, an Italian '2 Leather' swivel armchair in cream/cappuccino leather on a four-star base *SFP

Est £200 - £300



298

299 A 1960's Swedish rya rug or wall hanging decorated with blue and green triangles, 165 x 117 cm

Est £50 - £80

300 Tommaso Cimini for Lumina, a pair of 1980's Italian 'ZED' table lamps, labelled to the bases

Est £400 - £500



301



301 Niels Otto Moller (Danish, 1920-1982), a set of five Model 79 rosewood dining chairs upholstered in a grey Kvadrat fabric, maker's ink markings to the frames CITES Article 10 Transaction Specific Ref: 24GBA10WZ5OKZ *SFP

Est £1500 - £2000

302 A set of four 'Heart' stacking chairs with teak seats and beech frames, Model FH4103, designed by Hans Wegner (Danish, 1914-2007) in 1952

Est £800 - £1200



303



303 A Jonathan Harris of Ironbridge, circa 2004, the mottled ground with cane flowerheads and a blue seascape, signed, h. 10 cm

Est £60 - £100

304

A studio pottery bowl with incised and relief decoration modelled as swans, by Michael and Barbara Hawkins, di. 31 cm, together with a smaller matching bowl and a pair of matching jugs (4)

Est £80 - £120

306

Dorothy Bordass (1905-1992), 'The Patchwork Quilt', signed and dated '76, artist proof, image 21 x 29 cm, together with 'Child at Rest 3' (2)

Est £30 - £50

307

Jane Henderson (20th Century), 'Farther back than time can tell', signed and numbered 9/9, image 19 x 25 cm, together with two artworks by the same hand and a moonlit etching (4)

Est £30 - £50

308



308

After Michael Ayrton (1921-1975), Three children in conversation, blue background, unsigned with blind stamp, image 59 x 68 cm

Est £80 - £120

309



309

Lord Norman Foster for Walter Knoll, a 503 cream leather three-seater sofa together with a matching glass-topped coffee table (2) *SFP

Est £600 - £800

305

A pair of 1980's Habitat 'Helmet' bedside lamps with adjustable chromed shades on black shafts

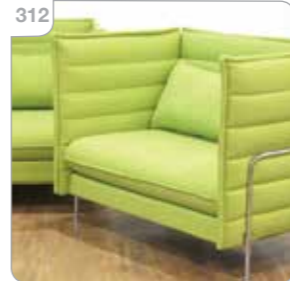
Est £60 - £80

310

Lord Norman Foster for Walter Knoll, a pair of 503 cream leather three-seater armchairs (2) *SFP

Est £500 - £700

312



312

Ronan & Erwan Bouroullec for Vitra, a pair of lowback 'Alcove' two-seater sofas in green on chrome plated frames, labels to the bases (2) *SFP

Est £400 - £600

313

A 1960's Danish teak sideboard attributed to Bernhard Pedersen, the single drawer over a fall-front concealed by three faux drawer fronts, flanked by two pairs of cupboard doors, on circular legs, 240 x 53 x 80 cm

Est £600 - £800

313



311



311

Ronan & Erwan Bouroullec for Vitra, a highback 'Alcove' three-seater sofa in green on a chrome plated frame, label to the base *SFP

Est £400 - £600



314

314 A 1960's Younger Ltd. 'Da Silva' teak sideboard, the three central drawers flanked by a pair of doors, 198 x 47 x 73 cm

Est £400 - £600

315 An Ercol elm Model 455 sideboard with three drawers and two doors, on castors, 155 x 42 x 69 cm

Est £150 - £200

316 Poul M. Volther (Danish, 1923-2001) for FDB, a pair of 1960's oak framed elbow chairs with geometric upholstery, stamped maker's marks to the frames *SFP

Est £200 - £300



316

317 Poul M. Volther (Danish, 1923-2001) for FDB, a pair of 1960's oak framed elbow chairs with geometric upholstery, stamped maker's marks to the frames *SFP

Est £200 - £300

318 Hans Wegner (Danish, 1914-2007) for Getama, a set of four 1960's oak framed dining or elbow chairs with blue fabric upholstery, stamped maker's marks to frames *SFP

Est £250 - £350



318

319 A circular drum coffee table, the smoked glass surface above a white laminate tier, on castors, stamped Roma, di. 87 cm

Est £40 - £60



319

320 A 1960's Swedish two-seater sofa by Lani of Malmo upholstered in green fleck on square block feet *SFP

Est £300 - £400

321 A 1970's teak bar counter with drop-ends, the two doors enclosing adjustable shelves, on a plinth base, w. 99 cm, h. 92 cm

Est £100 - £150



322 A 1970's teak four drawer chest with square handles, on later circular tapering legs, 90 x 43 x 75 cm
Est £100 - £150

323 A 1950/60's Danish lamp, the three spots on a straight shaft and cast metal base
Est £40 - £60

324 A 1970's Danish single-spot standard lamp in brushed aluminium
Est £30 - £50

325 A 1970's Danish brass-finished twin-spot standard lamp
Est £30 - £40



327 Yngve Ekstrom (Swedish, 1913-1988) for Swedese, a 'Lamino' armchair with lambswool upholstery, maker's ink stamp to the frame *SFP
Est £300 - £500

326 A 1960's Swedish armchair with green fabric upholstery, wings to the arms and teak detail, on teak circular legs *SFP
Est £150 - £200



328 A 1960's Danish two-seater upholstered sofa with a teak pedestal *SFP
Est £100 - £150

329 Rud Thygesen & Johnny Sørensen for Magnus Olesen, a 1970's Danish oak framed two-seater sofa, label to the frame *SFP
Est £300 - £400



330 A set of 1960's Danish teak dining chairs by Dyrlund, labels to carvers, upholstered in an orange geometric pattern *SFP
Est £80 - £120



331 A set of six Danish beech and upholstered elbow chairs by Slagelse Mobelvaerk, labels to the frames *SFP
Est £60 - £80

332 A set of six Danish beech and upholstered elbow chairs by Slagelse Mobelvaerk, labels to the frames *SFP
Est £60 - £80

333 A set of six Danish beech and upholstered elbow chairs by Slagelse Mobelvaerk, labels to the frames *SFP
Est £60 - £80

334 A set of five Danish beech and upholstered elbow chairs by Slagelse Mobelvaerk, labels to the frames *SFP
Est £50 - £70

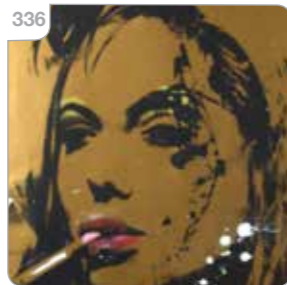


335 Ronald Chapeau (Dutch, 1969), 'Faye Dunaway', signed, mixed media, image 67 x 96 cm

Est £200 - £300

336 Ronald Chapeau (Dutch, 1969), 'Angelina', signed, mixed media, image 96 x 67 cm

Est £200 - £300



337 Ronald Chapeau (Dutch, 1969), 'Dali', signed, mixed media, image 67 x 96 cm

Est £200 - £300



338 Ronald Chapeau (Dutch, 1969), 'Einstein', signed, mixed media, image 76 x 105 cm

Est £200 - £300

339 Ronald Chapeau (Dutch, 1969), 'Joker', signed, mixed media, image 97 x 66 cm

Est £200 - £300



340 Ronald Chapeau (Dutch, 1969), A folio containing seven mixed media unframed artworks, various themes (7)

Est £600 - £800



341 Sanlé Sory (Burkino-Faso, b. 1943), 'Deux Amis En Tenue Disco', signed verso, gelatin silver print, image 80 x 80 cm, invoice and certificate from Olivier Sultan verso

Est £300 - £500

342 NOBLE/Nobless (French, b. 1990), 'Don't Miss It', stencil signature and certificate verso, mixed media, acrylic on panel, 100 x 100 cm

Est £300 - £500

343 NOBLE/Nobless (French, b. 1990), 'Stone Statue', certificate verso, dated 2023, mixed media, acrylic on paper, lithograph, image 50 x 75 cm

Est £150 - £200



344 NOBLE/Nobless (French, b. 1990), 'Headlines Homeric', certificate verso, print numbered 2/2, dated 2023, image 75 x 75 cm

Est £200 - £300



345 NOBLE/Nobless (French, b. 1990), 'Headlines Tok Tok', certificate verso, print numbered 1/2, dated 2023, image 75 x 75 cm

Est £200 - £300



346 IABO (b. 1980 Salvatore Rocco, Naples), 'Banksy VS Blek Le Rat', signed artist proof numbered AP 5/10, image 20 x 20 cm, together with 'Street War (Green Edition)', 'Murakamiabo' and 'Im Banksy (D. Hirst)', all with certification (4)

Est £150 - £200



347 21st Century, A Triumph and Tintin collage, signed and numbered 8/25, dated 2020, image 30 x 30 cm

Est £30 - £40



348 21st Century Street Art, 1000 Euro bank note incorporating The Simpsons family, indistinctly signed verso, image 35 x 67 cm, together with another depicting Asterix and Obelix on a French bank note and a 'One of a Kind Production' image of Homer Simpson (3)

Est £100 - £150



349 Bruno Landi (Italian, b. 1941), 'Senzo Titolo' (Untitled), signed, mixed media including pastels, image 32 x 23 cm, together with three others by the same hand, all with certification (4)

Est £300 - £400



350 Svend Skipper for Skippers Mobler, a 1950's Danish three-seater Model 91 sofa upholstered in multi-coloured buttoned fabric with teak armrests and matching splayed legs, l. 190 cm **SFP

Est £2000 - £2500



351 A late 20th century studio pottery vase of slab form, incised DM, h. 28 cm, together with two similar vases by the same hand and four further items of studio pottery (7)
*David Mitchell was a Bedford artist who painted, drew, threw pots and stained glass for many years.

Est £150 - £200

352 An 'Art de France' floor lamp, the shaft modelled as a curled cobra below an Art Nouveau style glass shade, signed

Est £500 - £700



353 In the manner of John Piper for Habitat, a 1960/70's coffee table, the laminate surface with a hunting scene, on black metal legs, 113 x 38 x 36 cm

Est £50 - £70

Hammer Prices - Bedford, November 2024 Sale

1	£50	41	£130	77	£50	109	£100	147	£65	191	£85	235	£190	276	£50	301	£110
2	£20	42	£600	78	£40	110	£100	149	£300	192	£200	236	£100	277	£40	302	£170
3	£85	43	£600	79	£140	111	£100	150	£400	193	£180	237	£80	279	£26	303	£30
5	£50	44	£650	80	£280	112	£100	151	£220	198	£60	239	£260	280	£40	304	£35
8	£130	45	£70	81	£240	113	£100	152	£160	199	£80	240	£160	281	£50	306	£45
9	£340	46	£360	82	£220	114	£220	153	£150	200	£160	241	£80	284	£220	309	£190
10	£100	47	£120	83	£190	115	£280	159	£120	202	£40	242	£60	285	£110	311	£40
11	£260	48	£90	84	£190	116	£200	160	£95	203	£30	244	£55	287	£95	312	£45
12	£750	49	£120	86	£300	118	£35	161	£30	204	£45	245	£300	288	£170	313	£200
14	£140	50	£35	87	£50	120	£22	162	£28	205	£50	246	£130	289	£240	314	£40
15	£130	51	£260	88	£20	122	£26	163	£110	207	£35	247	£100	290	£190	318	£30
17	£260	52	£120	89	£30	123	£35	164	£120	208	£220	249	£50	291	£20	319	£70
19	£85	54	£75	90	£65	124	£15	165	£190	210	£200	250	£220	292	£55	320	£160
20	£1300	55	£600	91	£20	125	£20	166	£190	212	£160	251	£200	293	£700	321	£80
21	£180	56	£200	92	£150	126	£30	167	£30	213	£30	252	£650	294	£340	335	£14
22	£140	57	£420	93	£130	128	£50	168	£30	214	£80	253	£700	295	£300	336	£12
24	£280	59	£850	94	£28	129	£130	169	£16	216	£90	262	£60	296	£26		
25	£40	60	£500	95	£40	131	£100	170	£22	217	£80	264	£45	297	£22		
26	£45	61	£50	96	£55	132	£95	171	£35	218	£75	265	£380	298	£110		
27	£65	62	£55	97	£45	133	£65	172	£20	224	£85	266	£20	299	£20		
29	£75	63	£50	98	£28	134	£75	173	£140	225	£300	267	£30	300	£360		
30	£75	66	£70	99	£35	135	£60	176	£120	226	£50	268	£100				
31	£50	68	£35	101	£3500	136	£30	180	£200	227	£120	269	£45				
32	£30	69	£170	102	£190	137	£24	181	£40	228	£45	270	£150				
33	£100	70	£50	103	£40	138	£22	182	£140	229	£30	271	£200				
34	£340	71	£60	104	£40	139	£26	183	£95	230	£26	272	£260				
35	£50	72	£30	105	£75	141	£55	184	£130	231	£85	273	£50				
36	£190	73	£35	106	£20	142	£10	185	£30	232	£85	274	£85				
37	£260	74	£30	107	£100	145	£14	187	£22	233	£240	275	£80				
40	£190	76	£24	108	£100	146	£80	190	£30	234	£300	276	£30				

Next Sale

Bedford Auction Centre
Friday 16th May 2025
Commencing at 10.30am

Visit our website for full details
www.peacockauction.co.uk